



COVID-19 in Ottawa Technical Briefing

**Dr. Brent Moloughney,
Deputy Medical Officer of Health**

April 14, 2021

Ottawa: Current Picture

- Weekly rate is the highest it's been since the beginning of the pandemic
- Percent of individuals testing positive has increased
- Numerous outbreaks (e.g., workplaces, schools, hospitals, sports & recreation, social events)
- Hospitalizations and ICU admissions highest since the beginning of the pandemic

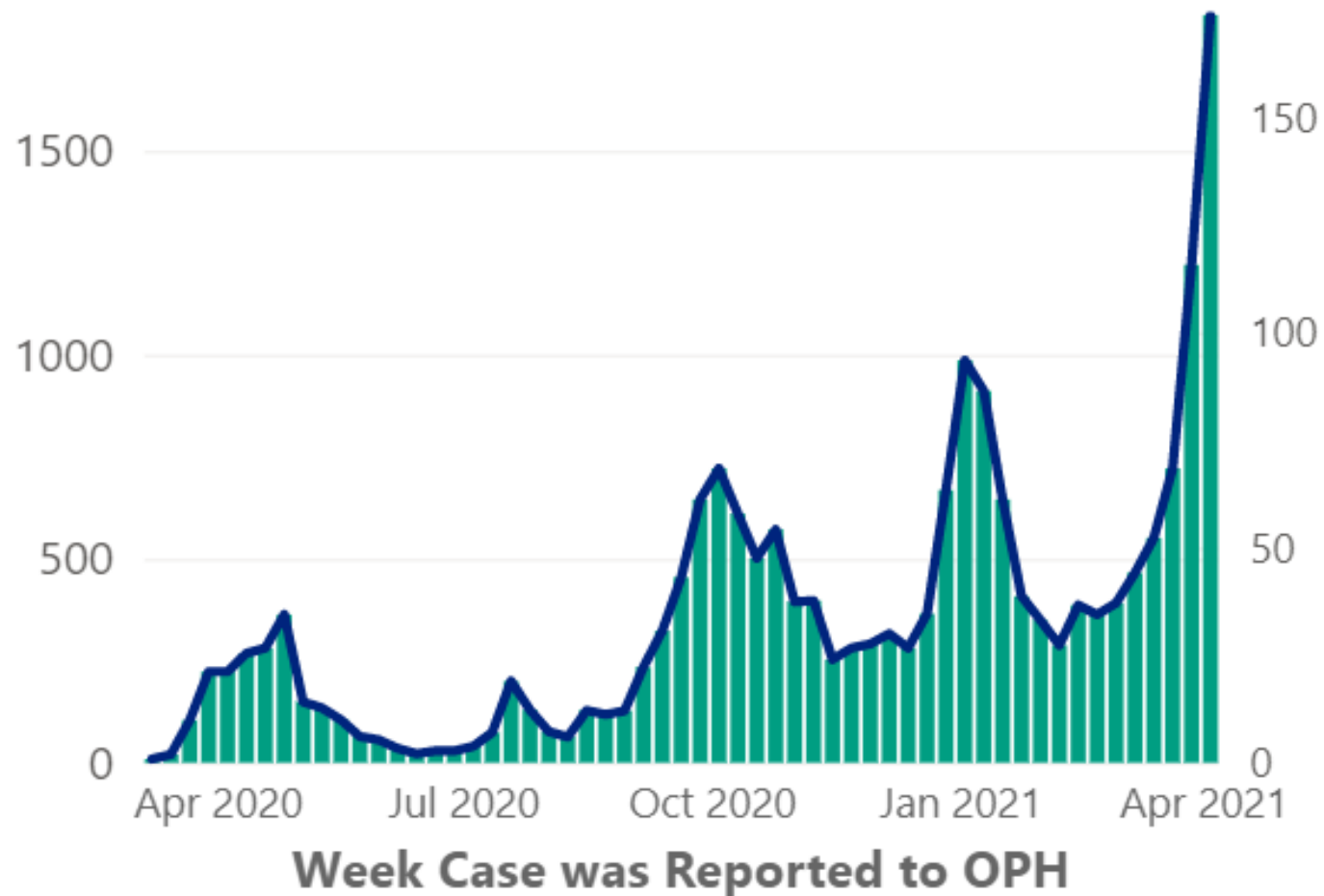


OPH Dashboard: OttawaPublicHealth.ca/COVIDDashboard

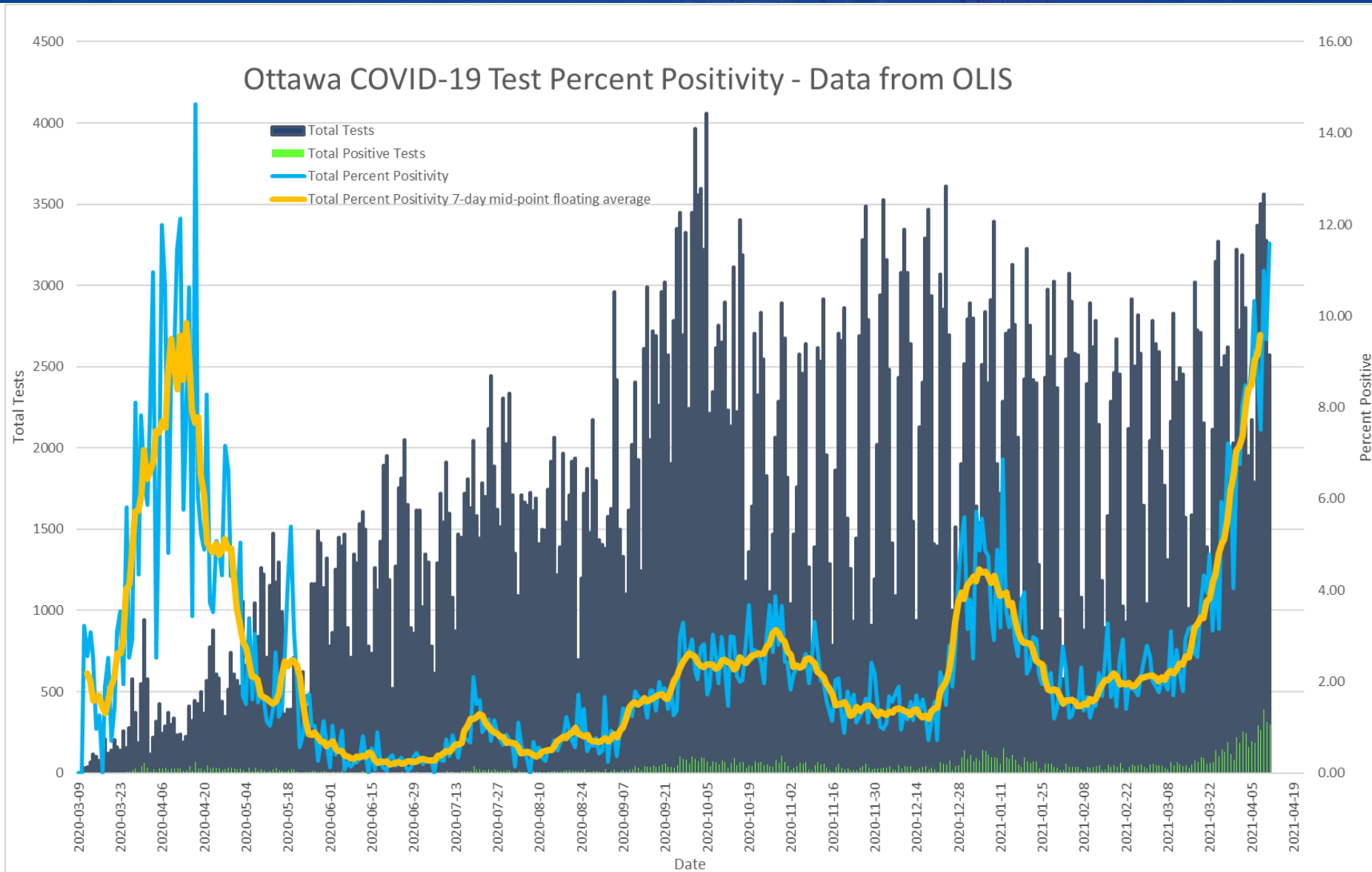
Increasing weekly numbers of people diagnosed with COVID-19

Newly Reported COVID-19 Cases by Week

● New COVID-19 Cases — Rate (per 100 000 population)

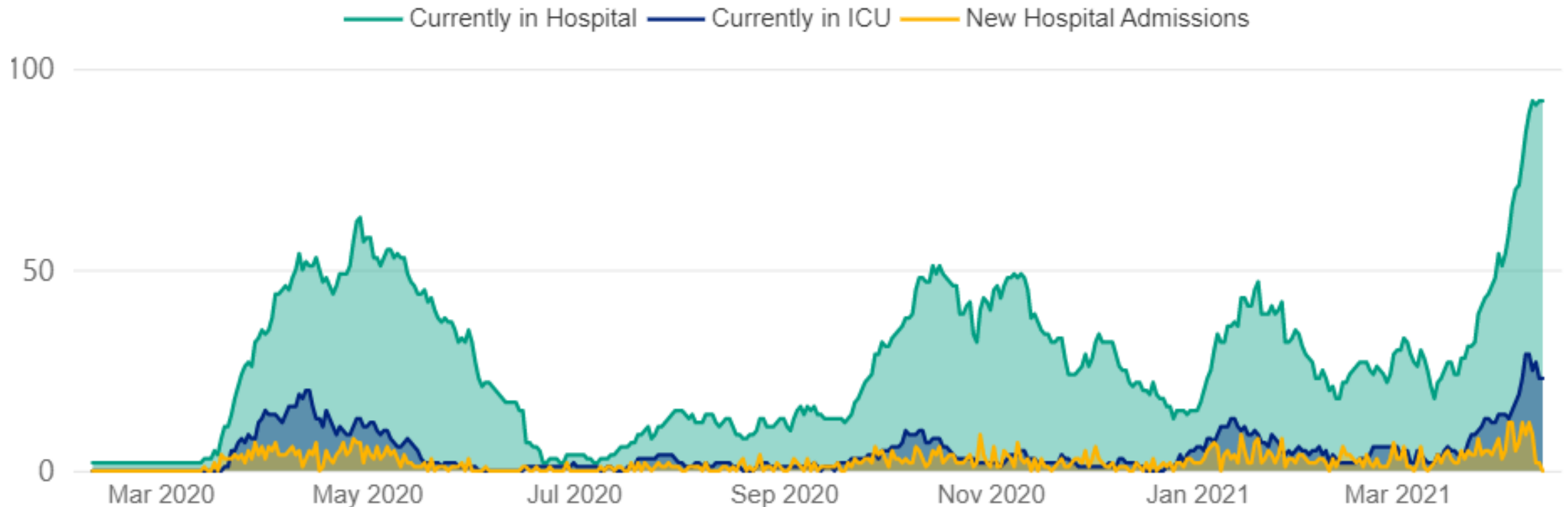


Percent of Positivity Increasing



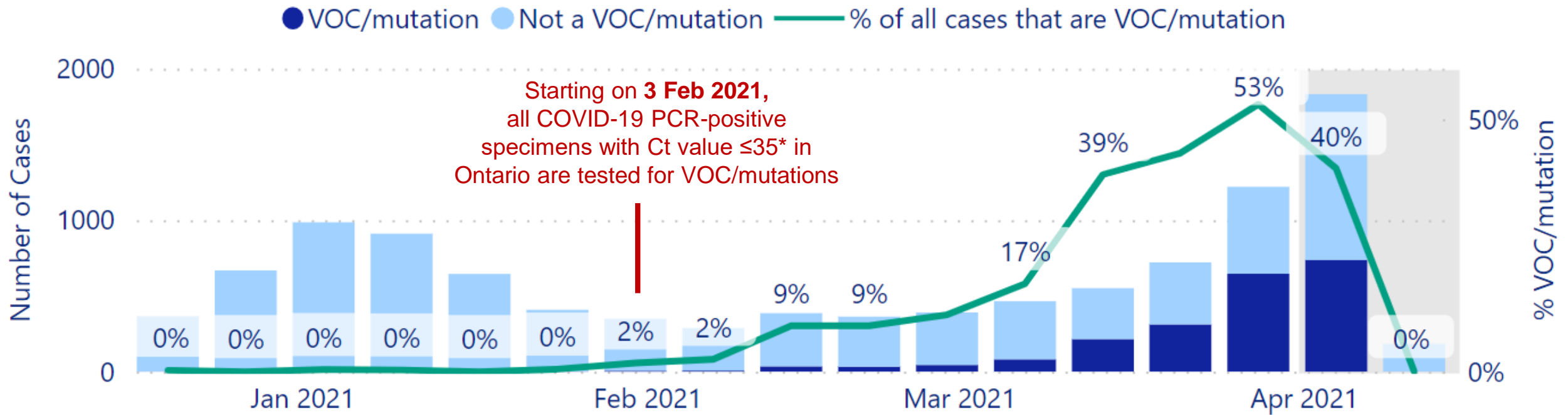
Impact of COVID-19 Community Transmission: Hospitalizations - Strong indicator, but lagging

Hospitalizations of Ottawa Residents with Confirmed COVID-19



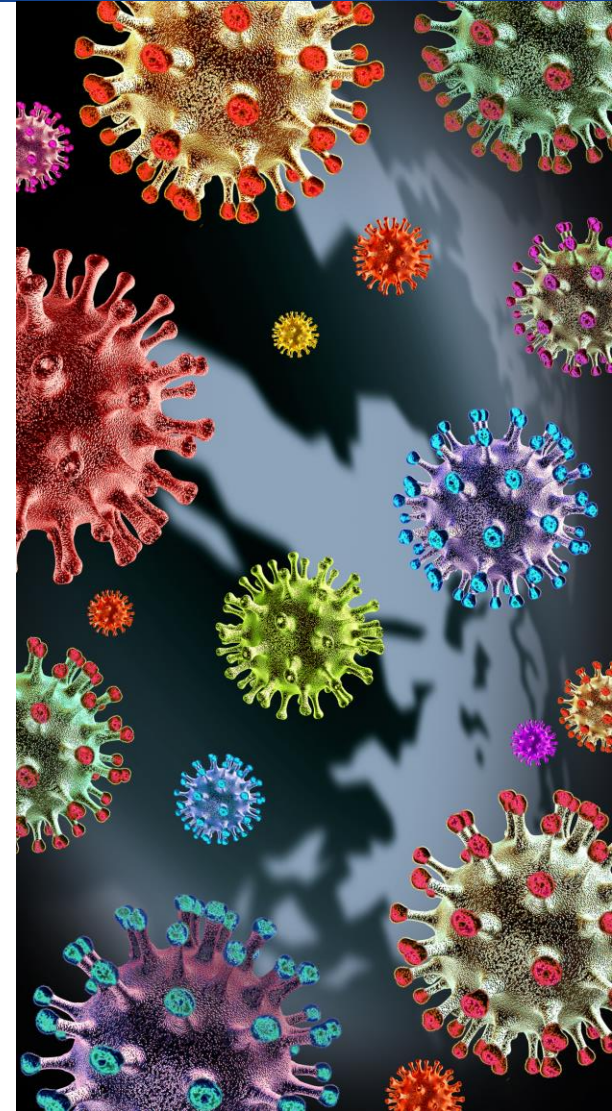
Variants of Concern (VOC) in Ottawa

Investigation subtype (VOC/mutation or non-VOC/mutation) by reported week



Variants of Concern (VOC)

- VOCs are at an increasing proportion of positive results
- VOC transmission can be prevented the same as non-VOCs
- Given the opportunity, VOCs increase probability of transmission (more virus particles produced; viruses attach better to receptors)



Vaccinations

- Over 157K doses administered to Ottawa residents focusing on older age groups
- Primary goal is to protect the people most at risk for hospitalization and death as a result of COVID-19
- Supporting neighbourhoods disproportionately impacted by COVID-19
- New Vaccination Dashboard:
OttawaPublicHealth.ca/VaccineDashboard



OPH Assessment

- Biggest resurgence to-date
- Given the opportunity, transmission risk increased
- Hospitalizations rising rapidly
- We need to do all we can to suppress this wave



OPH Assessment – Suppressing the Wave

- Individual actions work!
- Stay at Home Order (April 8), closure of in-person learning in schools
- Comprehensive measures have been effective elsewhere to address VOC-fuelled surges
- Continue to vaccinate those most at risk of serious illness and death (But, won't impact community transmission now)



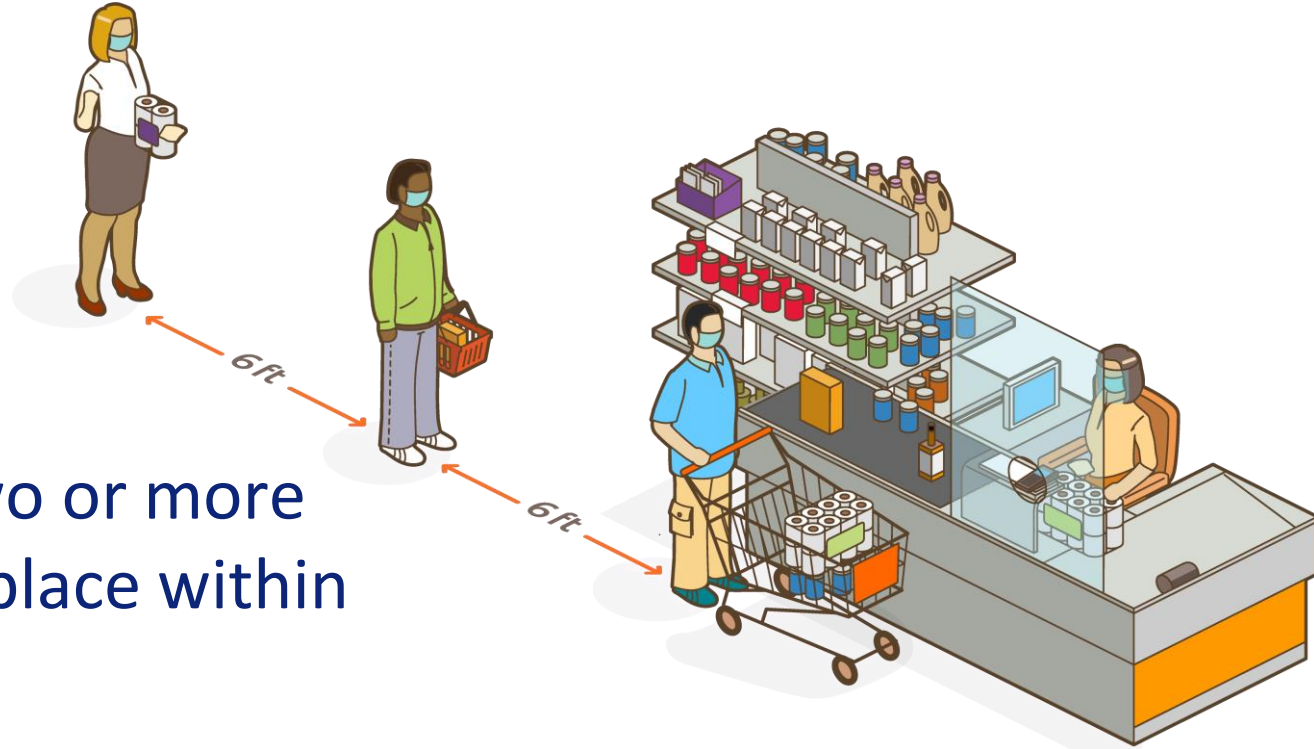
Crowding in Parks

- Parks are important
- Seeing lack of distancing and masks
- Working with partners to develop a Section 22 Class Order for summer outdoor recreational amenities
- Further details to follow



Letter of Instruction for Businesses – April 9, 2021

- Required to actively manage capacity limits in stores and physical distancing and masking in outdoor lineups
- Required to notify OPH when two or more people test positive in the workplace within a 14-day period
- Make all employees aware of any benefits and/or pay they are entitled to if they must isolate



OttawaPublicHealth.ca/WorkplaceCOVID19

Mental Health and Wellness Ongoing Priority

- Supports for parents with school aged children
- Providing supports to workplaces and small businesses
- Outreach and engagement of faith leaders
- Launch of *haveTHATtalk* About Racism videos during Mental Health Week:
May 3-9

CMHA

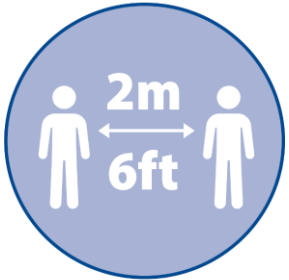
Mental Health Week

May 3-9, 2021



haveTHATtalk
temps D'EN parler

Stay Home and Stay Safe



- Enjoy the outdoors to exercise, not gather, and remember to distance, mask, and wash your hands.
- Stay home except for essential trips.
- Limit contacts to those in your household.
- Please be kind, to yourself and others.
- Check in on your mental health and remember, help is available.
- Connect virtually with loved ones.
- **For those who have been immunized: it is important to continue following all public health measures!**

Community Mental Health Resources

- **Mental Health Crisis Line** (24 hours a day/7 days a week) at 613-722-6914 or if outside Ottawa toll-free at 1-866-996-0991
- **Access MHA:** A single point of entry to eastern Ontario's system of care for mental health and addiction
- **Crossroads Mental Health Services** for children under 12, Call 613-723-1623
- **Youth Services Bureau** for 12 and older call 613-260-2360
- **Counselling Connect** at counsellingconnect.org
- **The Walk-in Counselling Clinic** at walkincounselling.com and 613-755-2277
- **Parents Lifeline of Eastern Ontario (PLEO)** at www.pleo.on.ca
- Visit OttawaPublicHealth.ca/CovidMentalHealth

